

EX-6072PoE

2-Port PoE (PSE) Gigabit Ethernet PCIe Card

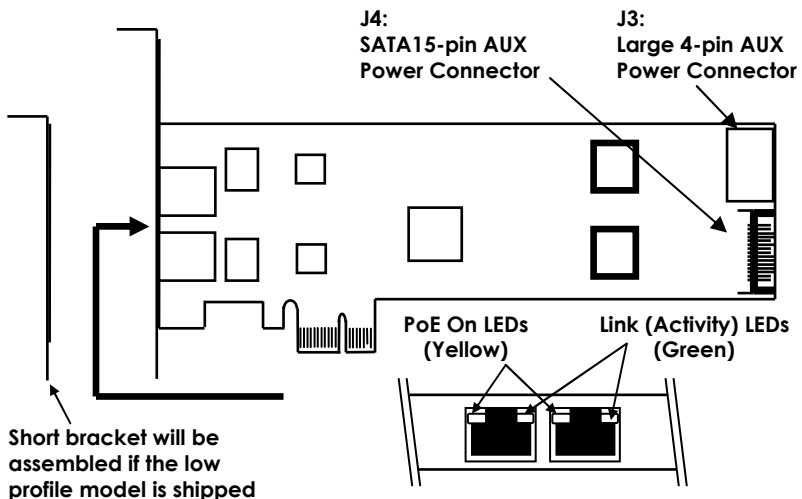
1. Introduction

Thank you for purchasing this Dual Channel PoE (PSE) Gigabit Ethernet PCI Express Card. It is the fastest LAN host adapter available in the market that is specially designed to connect dual channel gigabit LAN interface to any computer with PCIe (PCI Express) slots. It delivers isolated 48V DC power over Ethernet cable for PoE (PD) devices. It also supports crossover detection and auto-correction feature for the easy network cabling.

Features:

- ✓ Supports Two PoE (PSE) Gigabit Ethernet Ports
- ✓ Integrated 10/100/1000 Transceiver
- ✓ Supports PoE Specifications IEEE 802.3at Type 1 and 2
- ✓ Microsoft NDIS5, NDIS6 Checksum Offload (IPv4, IPv6, TCP, UDP) and Segmentation Task-offload (Large send v1 and v2) support
- ✓ Supports Jumbo Frame to 9K bytes
- ✓ Fully Compliant with IEEE 802.3 IEEE 802.3u, IEEE 802.3ab
- ✓ Supports Win98SE, ME, 2K, XP, XP64, Vista, Win7 and others

2. Board and Bracket Layout



3. Installing the Gigabit Ethernet PCIe Card

Due to the hot-plug feature of the PCI Express, the installation of the PCIe Dual Channel Gigabit Ethernet card is quite straightforward.

1. **Turn the system power OFF before installation!**
2. **Use static electricity discharge precautions. To avoid damaging any components on the card, handle it by edges.**
3. **Remove the chassis cover from your computer**
4. **Since this Card needs 12V to generate PoE power to its RJ45 connectors, please connect power supply cable to J3 (large 4-pin type) or J4 (SATA 15-pin type) power connectors**
5. **Locate an unused PCI Express slot (typically white and smaller) and remove the corresponding slot cover from computer chassis.**
6. **Plug the Dual Channel Ethernet PCIe card to the unused PCI Express expansion slot and attached the I/O card bracket to the computer chassis screw.**
7. **Put the chassis cover back on the computer.**
8. **Turn ON the power of your computer and peripherals.**
9. **Proceed with Software Driver Installation.**
10. **Installing LAN cables**

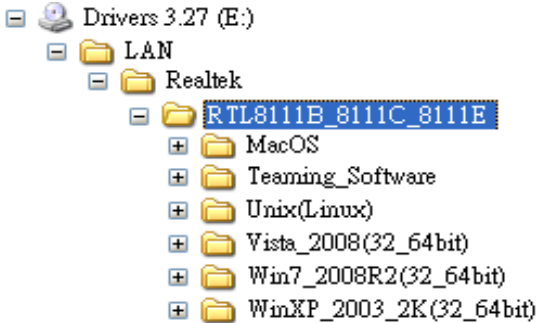
Connect the LAN cables to both RJ45 connectors of the Dual Channel Ethernet PCIe card. Please check the LEDs' status as follows:

- The '**LINK(ACT)**' LED will light if link on. However, the same LEDs will flash when transferring data.
- The '**PoE**' LEDs will light up if a (PoE) PD is connected. In this case, the 48V DC power was applied on the LAN cable. Otherwise, if the '**PoE**' LED is off, the device is not a (PoE) PD and the LAN cable does NOT carry 48V DC power on it.

LED Name	Color	LED Function
LINK(ACT)	Green	Steady on: Linked Blinking: Transferring Data
PoE	Yellow	Steady on: PoE Enabled. Off: PoE Disabled.

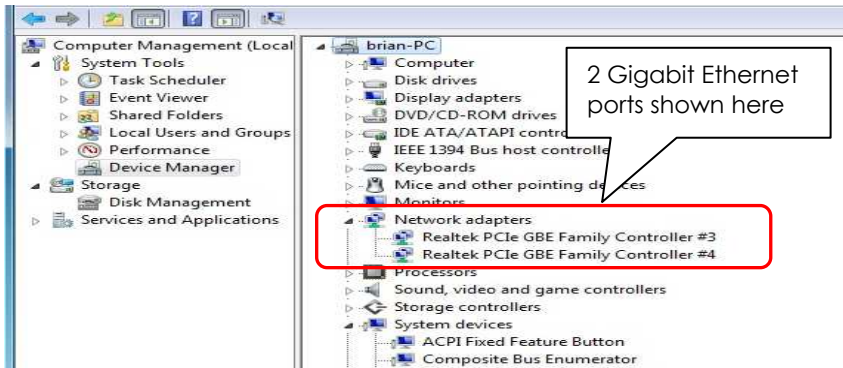
4. Windows Driver Installation

The Gigabit Ethernet drivers are shipped in the following folder of the driver CD.



Please browse to the corresponding driver folder when Windows ask you to specify the driver location. Then follow the on-screen instructions of the Windows to complete the installation.

You can use Device Manager to check the installation. Here are the screen shots showed you that it was installed correctly:



2-Port PoE (PSE) Gigabit Ethernet PCIe Card

