

# USB 3.0 DISPLAY ADAPTER

---

## USER MANUAL

## CONTENTS

---

---

<b>INTRODUCTION .....</b>	<b>3</b>
<b>FEATURES .....</b>	<b>3</b>
<b>SYSTEM REQUIREMENTS .....</b>	<b>3</b>
<b>SUPPORTED COMMON DISPLAY RESOLUTION: .....</b>	<b>4</b>
<b>NOTES .....</b>	<b>4</b>
<b>TECHNICAL SPECIFICATIONS: .....</b>	<b>5</b>
<b>PACKAGE CONTENTS .....</b>	<b>5</b>
<b>INSTALLATION ON WINDOWS 7.....</b>	<b>6</b>
<b>DEVICE DRIVER INSTALLATION .....</b>	<b>6</b>
<b>VERIFYING DEVICE DRIVER INSTALLATION (WINDOWS 7).....</b>	<b>11</b>
<b>DEVICE DRIVER UN-INSTALLATION.....</b>	<b>14</b>
<b>INSTALLATION ON WINDOWS XP .....</b>	<b>15</b>
<b>DEVICE DRIVER INSTALLATION .....</b>	<b>15</b>
<b>VERIFYING DEVICE DRIVER INSTALLATION (WINDOWS XP) .....</b>	<b>19</b>
<b>DEVICE DRIVER UN-INSTALLATION.....</b>	<b>21</b>
<b>FUNCTION DESCRIPTION .....</b>	<b>22</b>
<b>ACCESS USB 3.0 DISPLAY ADAPTER UTILITY .....</b>	<b>22</b>
<b>DISPLAY ID – Smart Display Device ID Detection.....</b>	<b>22</b>
<b>DISPLAY RESOLUTION – Fast Access to Display Resolution Setting .....</b>	<b>22</b>
<b>DISPLAY ROTATION.....</b>	<b>23</b>
<b>DISPLAY MODES .....</b>	<b>23</b>
<b>IDENTIFY MONITORS .....</b>	<b>24</b>
<b>MULTI-DISPLAY CONTROL PANEL .....</b>	<b>24</b>
<b>DISPLAY SETTINGS .....</b>	<b>25</b>
<b>FIXED POSITION .....</b>	<b>25</b>
<b>REGULATORY COMPLIANCE .....</b>	<b>26</b>

## INTRODUCTION

Thank you for purchased the USB 3.0 DISPLAY ADAPTER. By 10 times faster than USB 2.0, the USB 3.0 DISPLAY ADAPTER provides a unique solution to add an extra display for your computer just plug and play. It works as external video card which allows adding an additional display instantly without hassle of open the computer chassis to install the internal graphics card. The connected display can act as mirrored or extended desktop of the main display on your computer. You can experience 1080P video playback through HDMI/VGA interface and Super Speed USB 3.0 for both work and entertainment.

## FEATURES

- ◆ USB 3.0 / USB 2.0 specification compliant
- ◆ LED indicator: Green light→ USB 3.0 / Red light→ USB 2.0
- ◆ Supports display resolution up to 2048 x 1152 @32bit
- ◆ Supports 1080P video playback
- ◆ Plug-and-Play USB connectivity after software installed
- ◆ Support multi-display up to six adapters for office application
- ◆ Support Function
  - Display Modes: Primary, Extended, Mirror
  - Display Rotation: 0°, 90°, 180°, 270°

## SYSTEM REQUIREMENTS

- ◆ Available USB 3.0 / USB 2.0 port (USB 3.0 recommended)
- ◆ 1~2 USB Displays (office application):
  - CPU: i3 Dual core 2.8GHz
  - RAM: 2GB memory or higher
- ◆ 3~4 Displays (office application):
  - CPU: i5 Quad Core 2.8GHz
  - RAM: 4GB memory or higher
- ◆ 5~6 Displays (office application):
  - CPU: i7 Quad Core 3.0GHz
  - RAM: 8GB memory or higher
- ◆ Full HD Video one display
  - i5 Processor recommended
  - CPU: Quad Core 3.0GHz or higher
  - RAM: 4GB memory or higher
- ◆ Windows 7 / Windows XP & Mac Snow Leopard / Lion  
(Recommended Windows XP & Mac Snow Leopard/ Lion for office application)

## SUPPORTED COMMON DISPLAY RESOLUTION:

Aspect Ratio	Resolution	Color Depth
Wide Screen Display		
16:9	2048 x 1152	16,32 bits
16:10	1920 x 1200	16,32 bits
16:9	1920 x 1080	16,32 bits
16:10	1680 x 1050	16,32 bits
16:9	1600 x 900	16,32 bits
16:10	1440 x 900	16,32 bits
16:9	1366 x 768	16,32 bits
16:9	1360 x 768	16,32 bits
16:10	1280 x 800	16,32 bits
15:9	1280 x 768	16,32 bits
16:9	1280 x 720	16,32 bits
Standard Display		
4:3	1600 x 1200	16,32 bits
4:3	1400 x 1050	16,32 bits
5:4	1280 x 1024	16,32 bits
4:3	1280 x 960	16,32 bits
4:3	1152 x 864	16,32 bits
4:3	1024 x 768	16,32 bits
4:3	800 x 600	16,32 bits

- ◆ **Monitor refresh frequency: 60 Hz**

## NOTES

- ◆ Please visit our website to update the latest driver version for the good performance.
- ◆ Do not recommend to connect USB 3.0 DISPLAY ADAPTER via the external USB Hub.
- ◆ System reboot is required for the driver installation.
- ◆ LED indicator: Green light up→USB 3.0 / Red light up→USB 2.0
- ◆ Note for video player:  
Windows XP user: Windows Media Player 10 & 11 is the only tool for video playback.  
MAC user: MAC products did not support USB 3.0 at this moment, therefore we suggest USB 2.0 for 'Office Application' only.

## TECHNICAL SPECIFICATIONS:

<b>Operating System</b>	<b>Windows 7 / XP (32bit &amp;64bit)</b> <b>Mac Snow Leopard / Lion</b>
<b>Host Interface</b>	<b>USB 3.0 A type connector</b> <b>Cable length:17±1cm connected</b>
<b>Video Output Connector</b>	<b>DB- 15pin (female) – Model: USB3.0 -VGA</b> <b>HDMI (female) – Model: USB3.0 -HDMI</b>
<b>Case Material</b>	<b>ABS</b>
<b>Power Source</b>	<b>Bus Powered</b>
<b>Regulatory Compliances</b>	<b>CE, FCC, VCCI and C-Tick</b> <b>RoHS compliant</b>
<b>Environmental Specification</b>	<b>Operating Temperature: 0~55°C</b> <b>Storage Temperature: -10~75°C</b> <b>Humidity: &lt;85% non-condensing</b>

## PACKAGE CONTENTS

- ◆ USB 3.0 DISPLAY ADAPTER \* 1
- ◆ Driver / Manual CD \* 1
- ◆ Quick Installation Guide \* 1

## INSTALLATION ON WINDOWS 7

### DEVICE DRIVER INSTALLATION

Installing the device driver enables your computer's operating system to recognize the **USB 3.0 DISPLAY ADAPTER** once it's connected. Please check your operating system and refer to the appropriate installation procedure to begin installing the device driver.

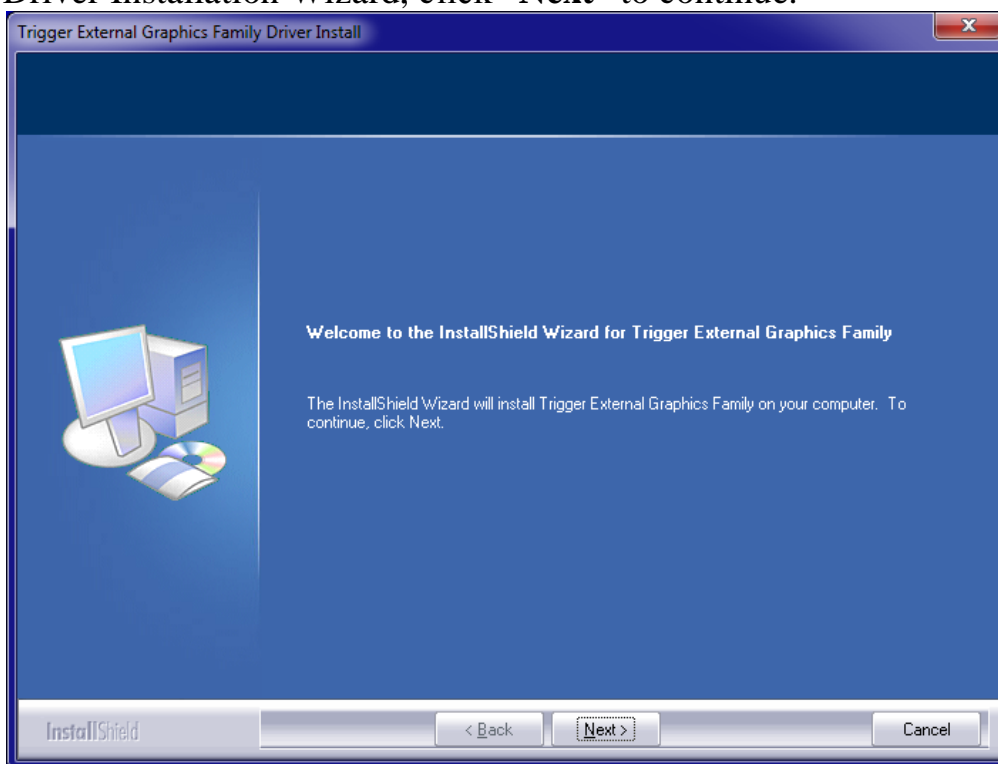
This section illustrates the simple device driver installation procedure for computer running Windows 7 operating system. Please make sure the **USB 3.0 DISPLAY ADAPTER** is **unplugged** from your PC or Notebook before executing the setup program.

#### Step 1.

Insert the Driver CD into the CD-ROM drive; the setup program should be launched automatically. If setup program does not begin automatically, click Start, Run and double click "**D:\Setup.exe**" (where D: is the path of your CD-ROM drive).

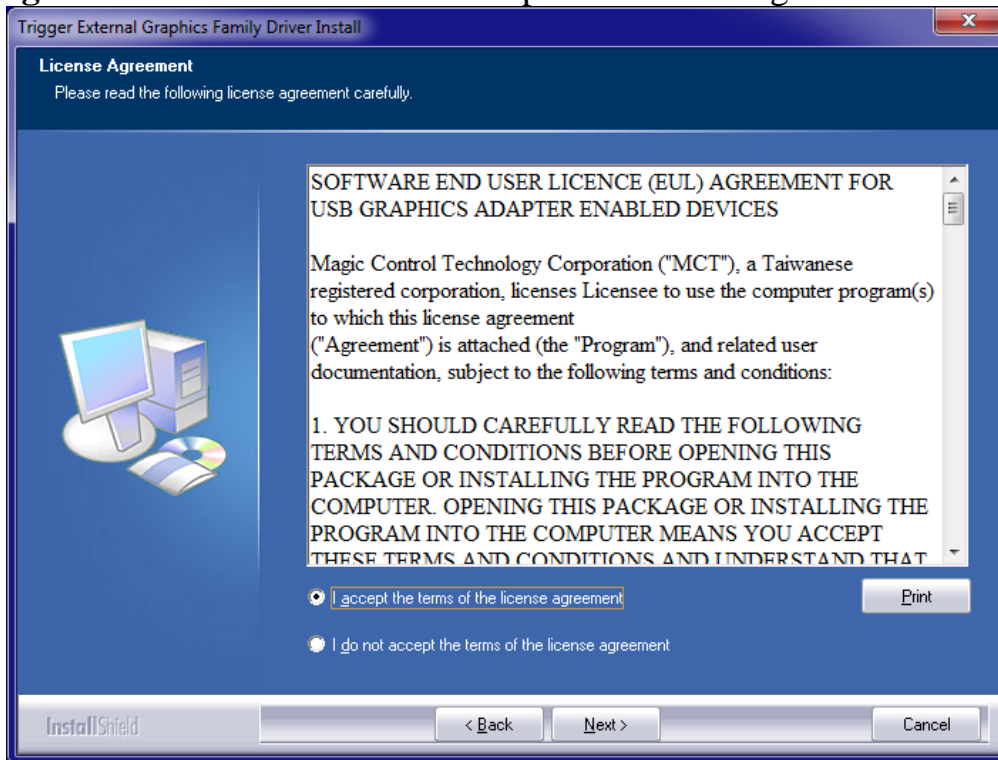
#### Step 2.

Driver Installation Wizard, click "**Next**" to continue.



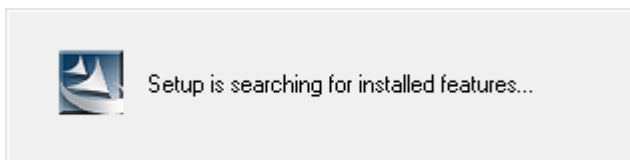
### Step 3.

License Agreement; please review it and check **“I accept the terms of the license agreement.”** Click **“Next”** to accept the License Agreement.



### Step 4.

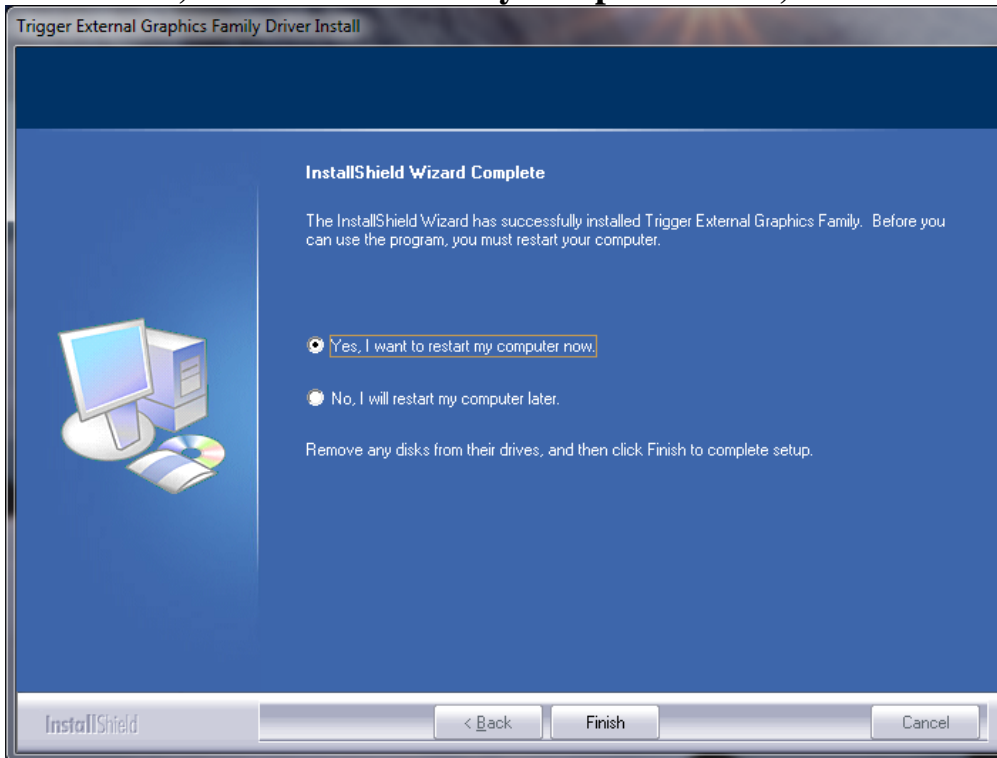
Setup is searching for installed features.....



*\*You may notice there a screen flashes during hardware installation. It is part of the normal process.*

## Step 5.

Select “**Yes, I want to restart my computer now**”, and click “**Finish**” to reboot.



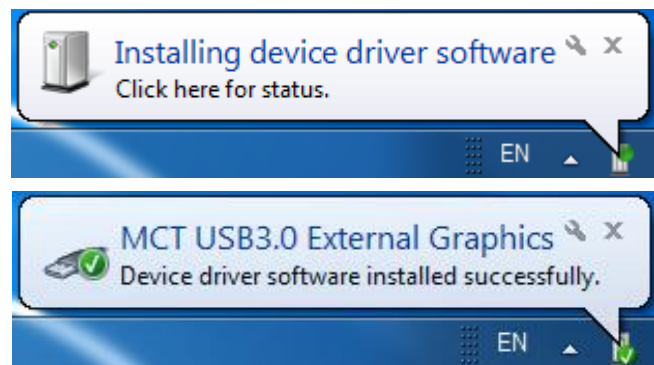
## Step 6. HARDWARE DEVICE DRIVER INSTALLATION

**After reboot**, please connect the external display device (monitor/projector) to the VGA/HDMI connector of **USB 3.0 DISPLAY ADAPTER** and turn on the display device.

Then plug the **USB 3.0 DISPLAY ADAPTER** into an available USB 3.0 port of your PC or Notebook. The device driver software setup will begin automatically.

After the driver is configured, you also could click “Show hidden icon” and will see the “Super Utility” icon on taskbar.

The extended display will be shown on the attached display device. You may begin to use the USB 3.0 Display Adapter with your display device.



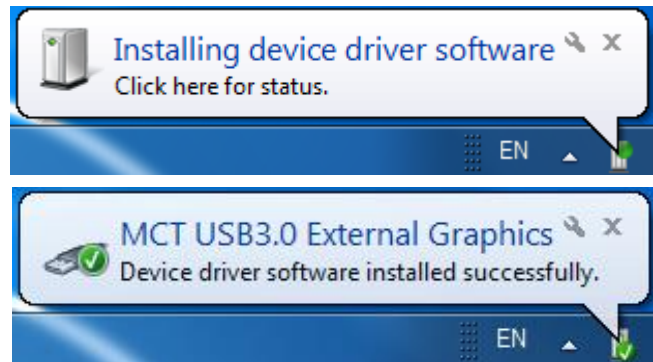


## Step 7. INSTALLATION OF MULTIPLE USB 3.0 DISPLAY ADAPTERS

Please plug the additional **USB 3.0 DISPLAY ADAPTER** into the available USB 3.0 port of your PC or Notebook.

The system will automatically start the installation procedure and the prompt message will pop-up on the task bar.

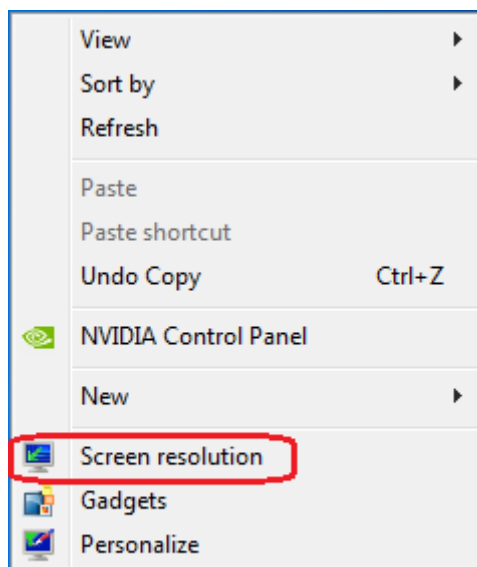
The device driver software was installed properly.



To make sure the USB 3.0 Display Adapters worked correctly, please reboot the computer after finished the installation. After reboot the computer, the USB extended display will be shown on the attached display device.

**The device is now installed completely and ready to use.**

If the extended display come out with the duplicate or blind screen, please right click on the desktop of your system, it will pop up a screen and select **“Screen resolution” (a)**, or go to **“START” → “Control Panel” → “Appearance and Personalization” → “Adjust screen resolution” (b)**. Then, select **“Extend these displays” (c)** on the Display Property.

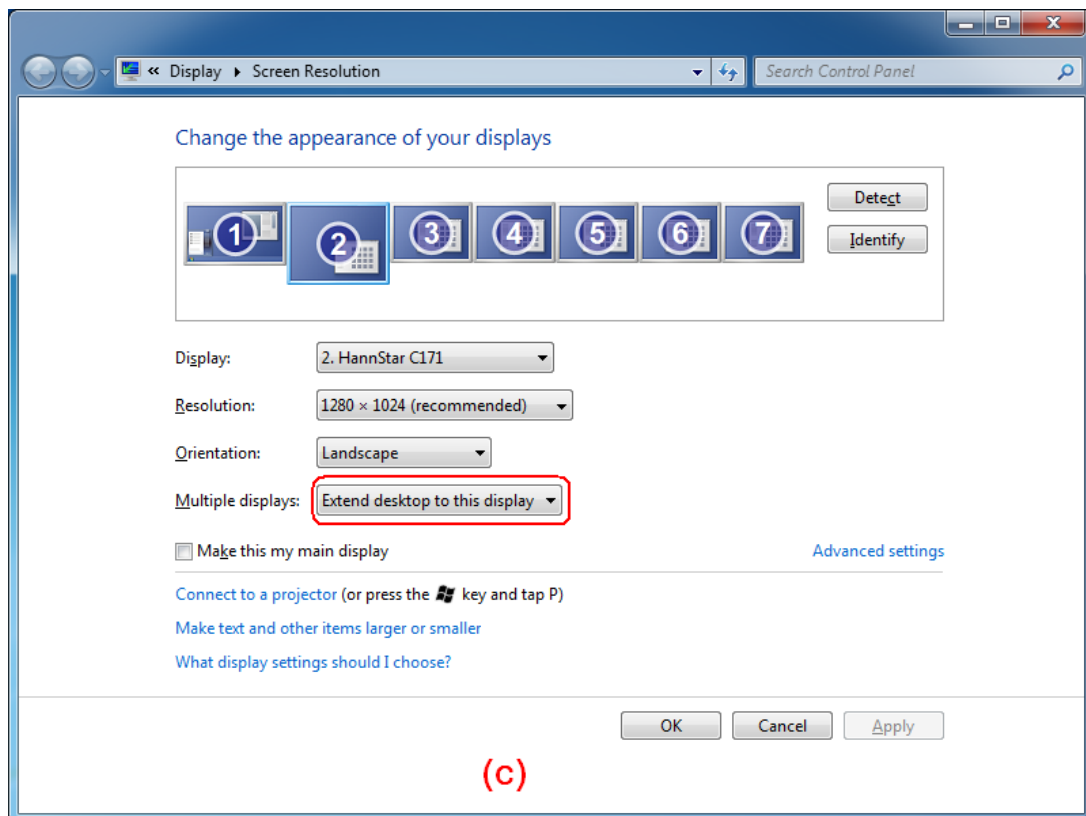


**(a)**





After reboot the computer, the USB extended display will be shown on the attached display device.



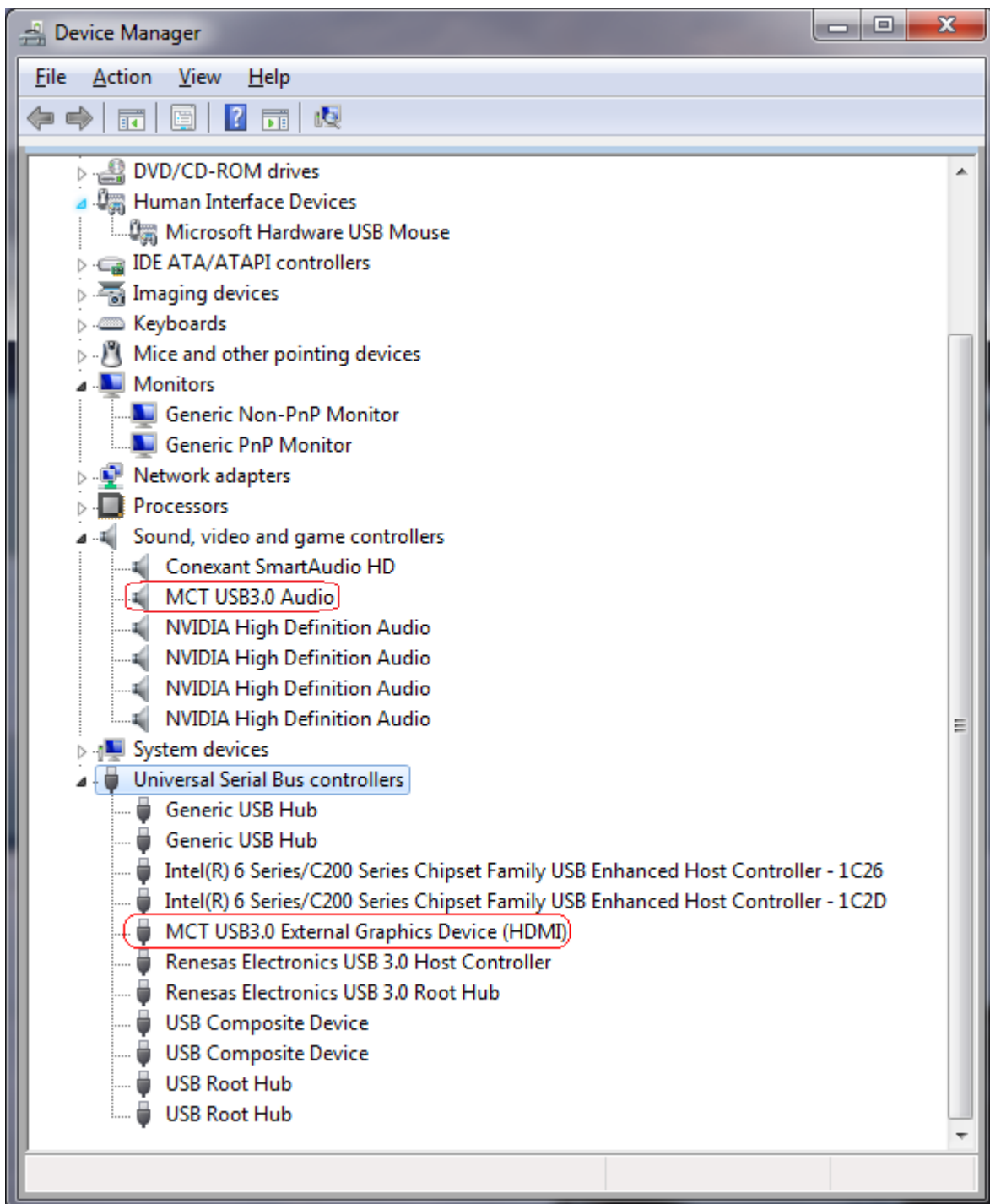
## VERIFYING DEVICE DRIVER INSTALLATION (WINDOWS 7)

The following procedure allows you to verify the device driver installation.

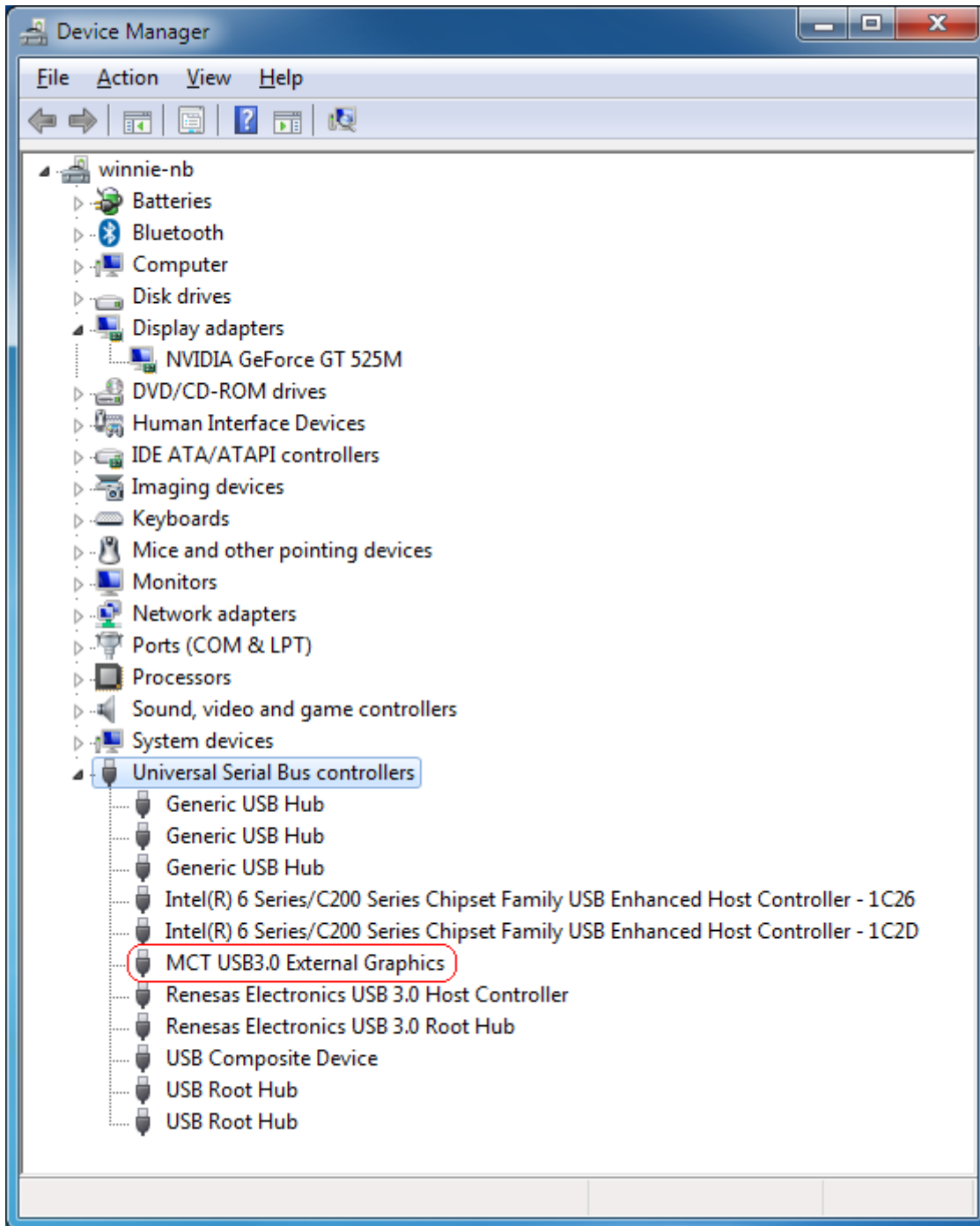
Please right click “**Computer**” → “**Properties**” → “**Device Manager**”.

Plug-in the **USB 3.0 DISPLAY ADAPTER**, then double click “**Universal Serial Bus controllers**”. Begin verification by make sure highlighted devices were added to the system.

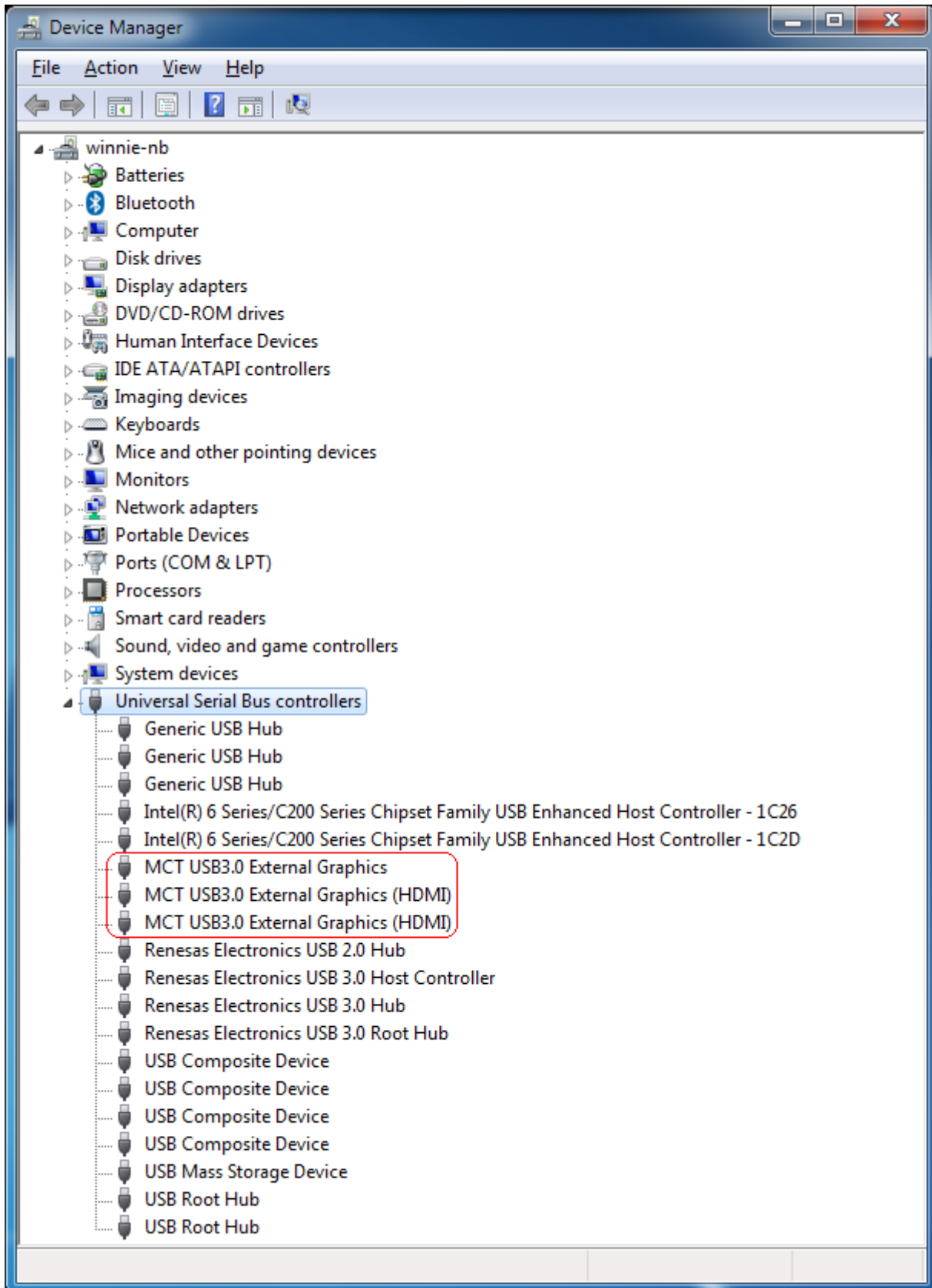
### ➤ Single USB 3.0 HDMI display adapter installation on the computer



➤ **Single USB 3.0 VGA display adapter installation on the computer**




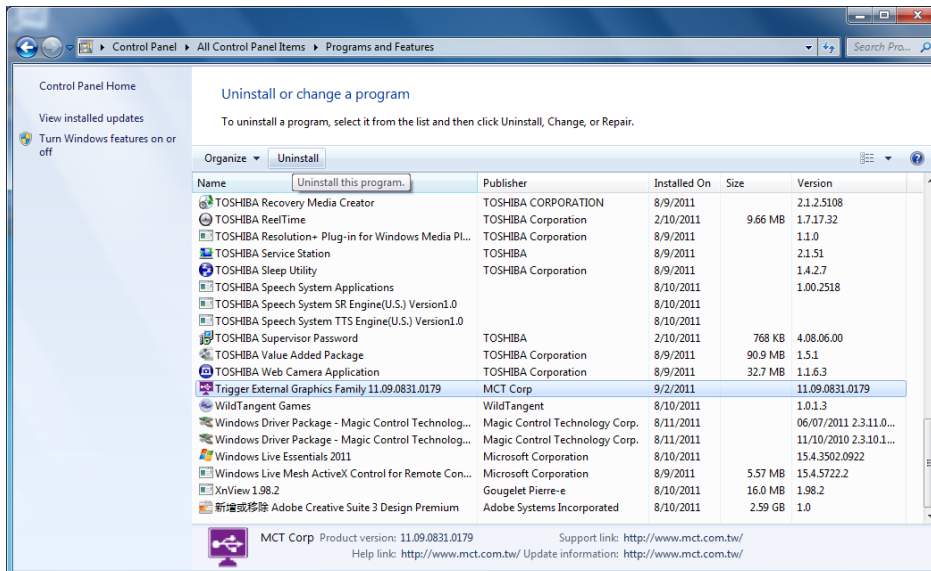
➤ **Multiple USB 3.0 Display Adapters installation on the computer**



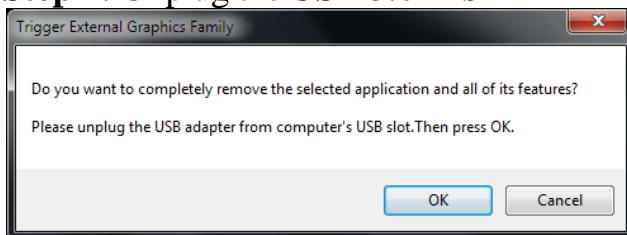
## DEVICE DRIVER UN-INSTALLATION

### Step 1. Access Program Uninstall:

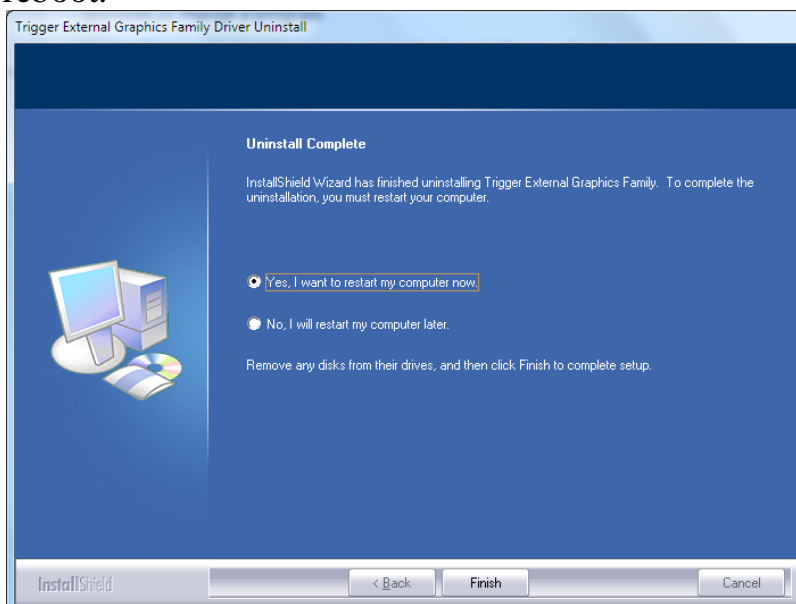
Click “Start” → “Control Panel” → “Programs”. Click “Uninstall a program”  
Look for “ USB External Graphics Family 11.xx.xxxx.0179” (driver version).  
Click “Uninstall” button.



### Step 2. Unplug the USB 3.0 DISPLAY ADAPTER and click “OK” to continue.



### Step 3. Select “Yes, I want to restart my computer now” and click “Finish” to reboot.



After reboot, you will complete the driver un-installation.

## INSTALLATION ON WINDOWS XP

### DEVICE DRIVER INSTALLATION

Installing the device driver enables your computer's operating system to recognize the **USB 3.0 DISPLAY ADAPTER** once it's connected. Please check your operating system and refer to the appropriate installation procedure to begin installing the device driver.

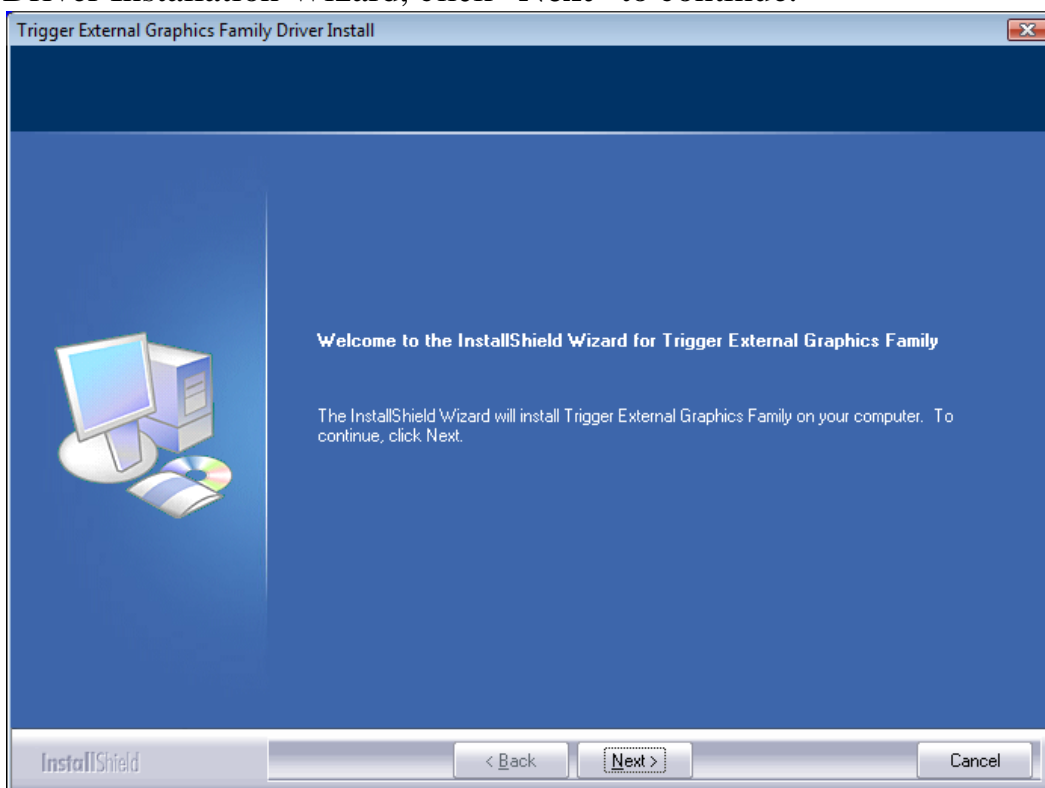
This section illustrates the simple device driver installation procedure for computer running Windows XP operating system. **Please make sure the USB 3.0 DISPLAY ADAPTER is unplugged from your PC or Notebook before executing the setup program.**

#### Step 1.

Insert the Driver CD into the CD-ROM drive; the setup program should be launched automatically. If setup program does not begin automatically, click Start, Run and double click "**D:\Setup.exe**" (where D: is the path of your CD-ROM drive).

#### Step 2.

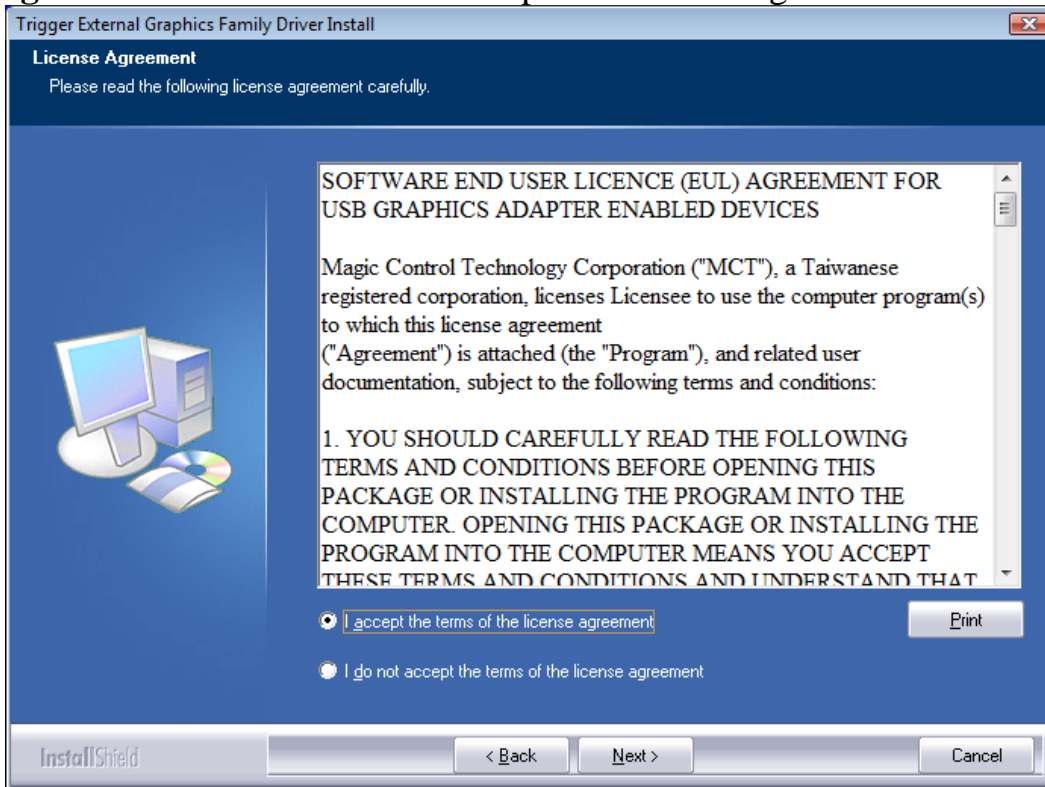
Driver Installation Wizard, click "**Next**" to continue.





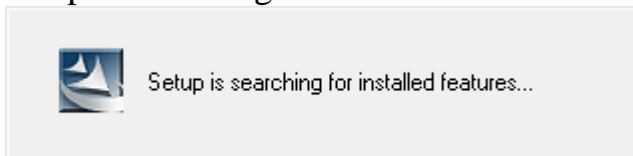
### Step 3.

License Agreement; please read it and select **“I accept the terms of the license agreement.”** Click **“Next”** to accept the License Agreement.



### Step 4.

Setup is searching for installed features.....



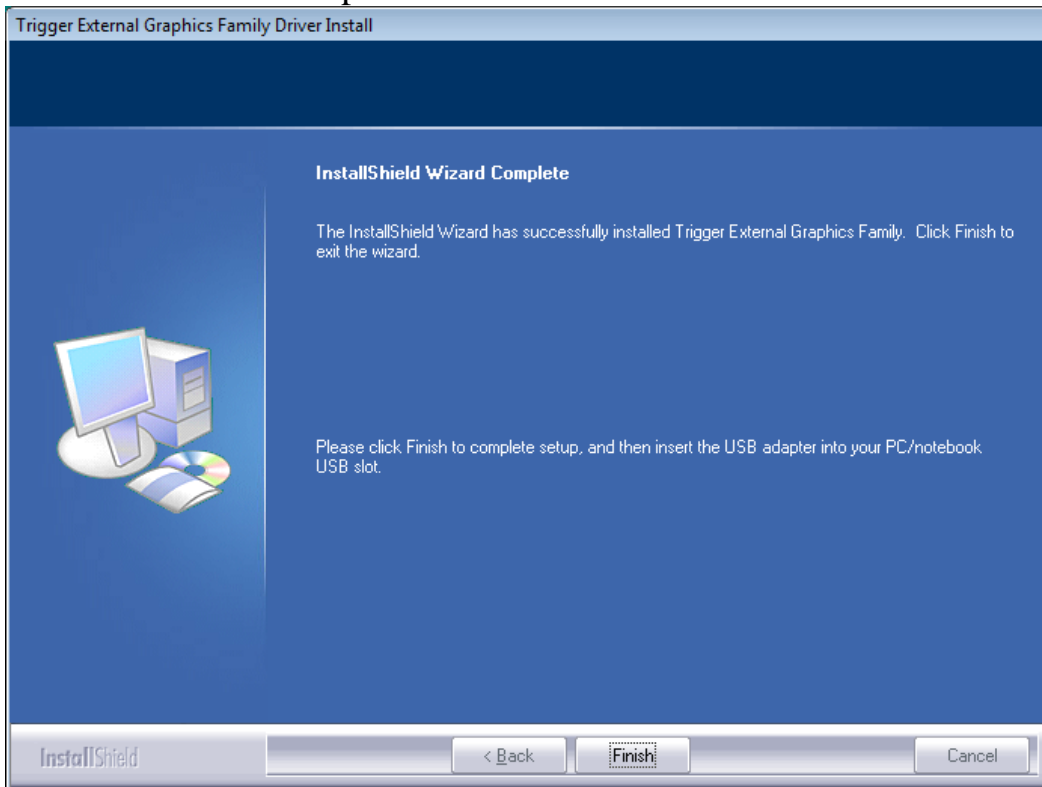
※ You may notice the screen flashes during hardware installation. It is part of the normal process.

※ When the Microsoft Windows Security warning dialogue box appears, please select **“Continue Anyway”** to continue with the installation. This will not affect the device driver installation and the device usage.





## Step 5.

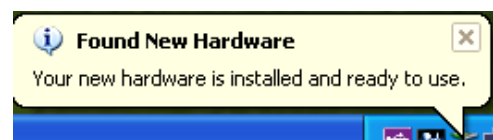
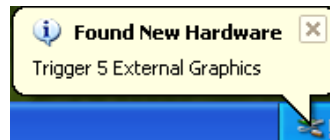
Click **“Finish”** to complete the software installation.



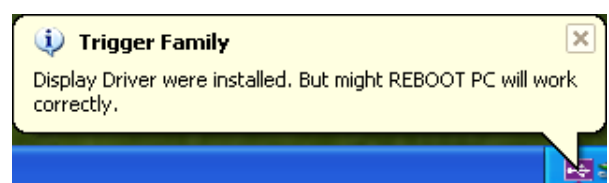
## Step 6. HARDWARE DEVICE DRIVER INSTALLATION

1. Please connected the external display device (monitor/projector) to the VGA/HDMI connector of USB 3.0 Display Adapter and switch it on.
2. Then, insert the USB 3.0 Display Adapter into an available USB port of your computer. The device driver will be configured automatically. Then, the extended display will be shown on the attached display device, and have two icons   on the lower right taskbar.

*※When the Hardware Installation Wizard dialog appears, please select **“No, not this time”** and click **“Next”** to continue. Click **“Continue Anyway”** when the Microsoft Software warning dialogue box appears. Then, click **“Finish”** to complete the Hardware Wizard.*



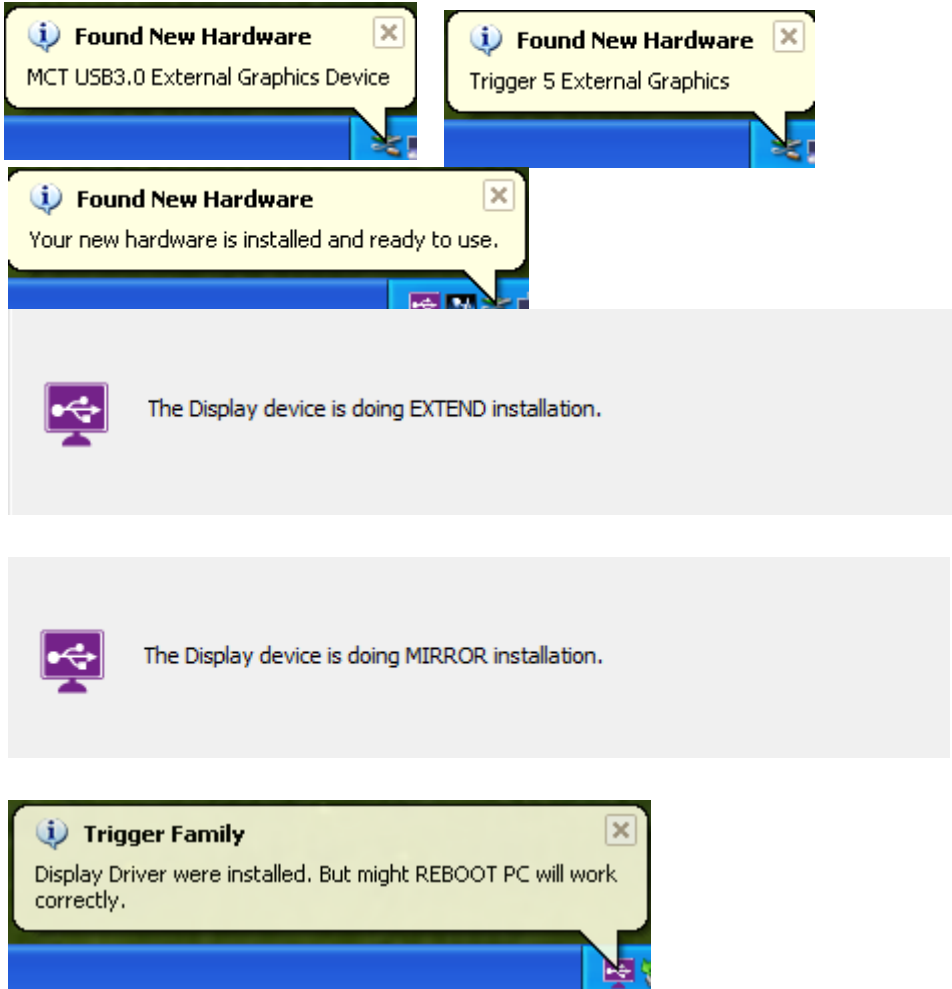
3. To make sure the USB 3.0 Display Adapter worked correctly, please reboot the computer. **After reboot the computer, the device is now installed completely and ready to use.**



## Step 7. INSTALLATION OF MULTIPLE USB 3.0 DISPLAY ADAPTERS

Please plug the additional **USB 3.0 DISPLAY ADAPTERS** into the available USB 3.0 port of your PC or Notebook. The setup process will begin automatically.

You may see below notification balloons for each additional.



To make sure the USB 3.0 Display Adapters worked correctly, please reboot the computer after finished the installation. **After reboot the computer, the device is now installed completely and ready to use.**

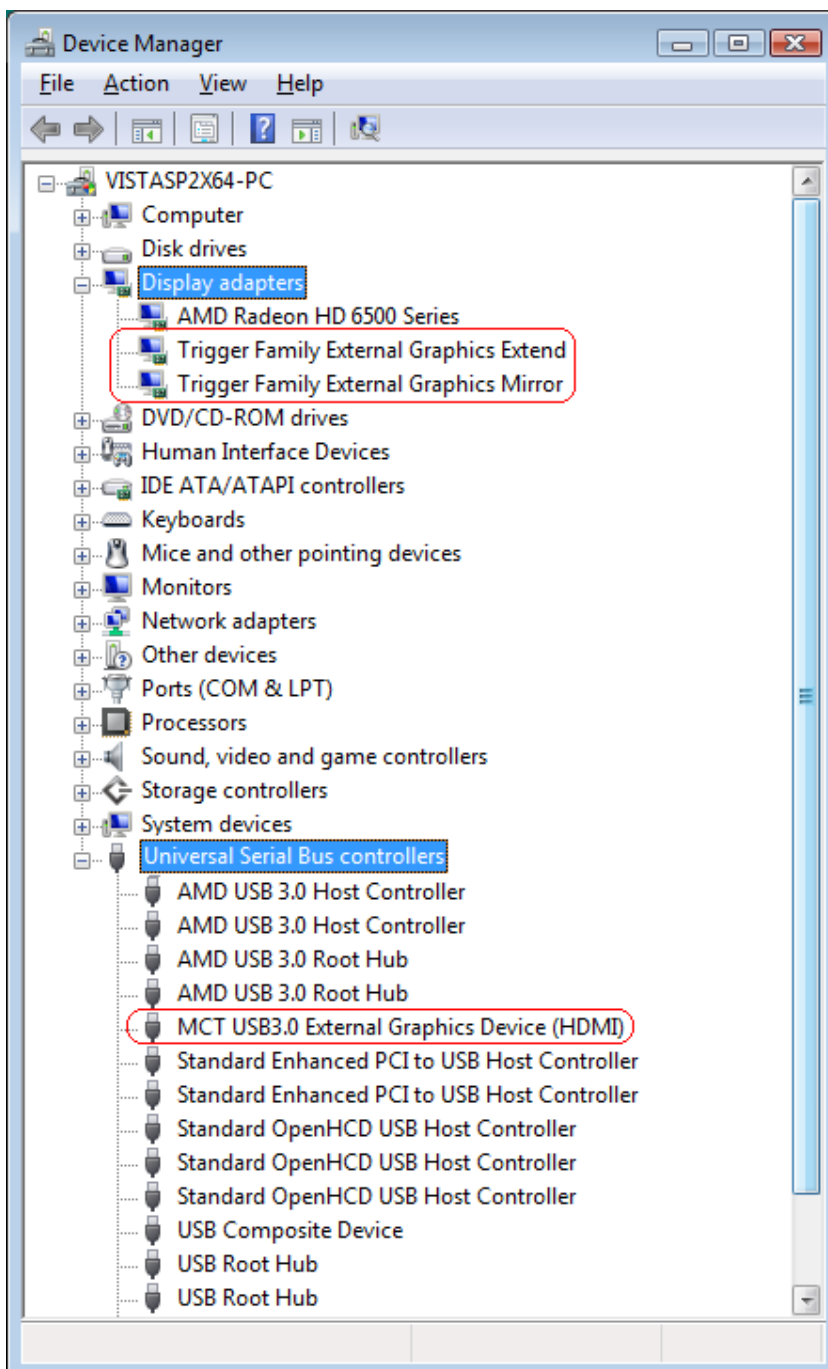
## VERIFYING DEVICE DRIVER INSTALLATION (WINDOWS XP)

The following procedure allows you to verify the device driver installation.

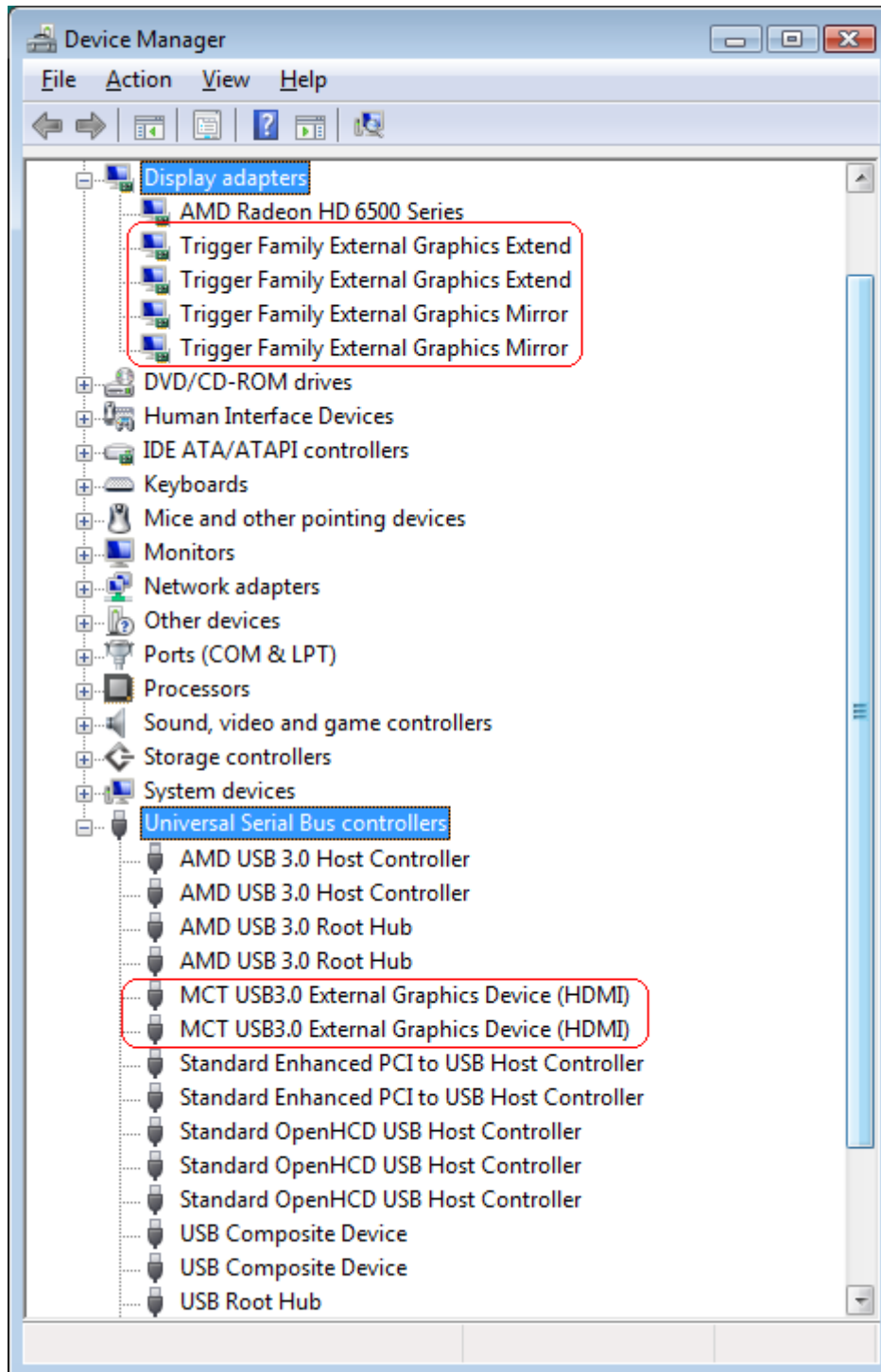
Please right click “**My Computer**” → “**Properties**” → “**Hardware**” → “**Device Manager**”.

Plug-in the **USB 3.0 DISPLAY ADAPTER**, then double click “**Display adapters**”, and “**Universal Serial Bus controllers**”. Begin verification by make sure highlighted devices were added to the system.

- Single USB 3.0 Display Adapter installation on the computer



- Multiple USB 3.0 Display Adapters installation on the computer

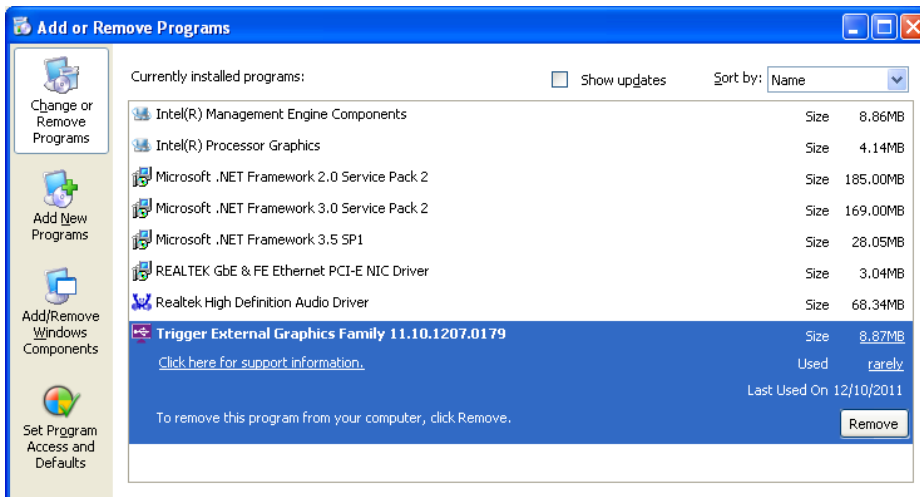


## DEVICE DRIVER UN-INSTALLATION

**Step 1. Click “Start” → “Control Panel” → “Add or Remove Programs”**

Select “ **Trigger External Graphics Family 11.xx.xxxx.0179**” (driver version).

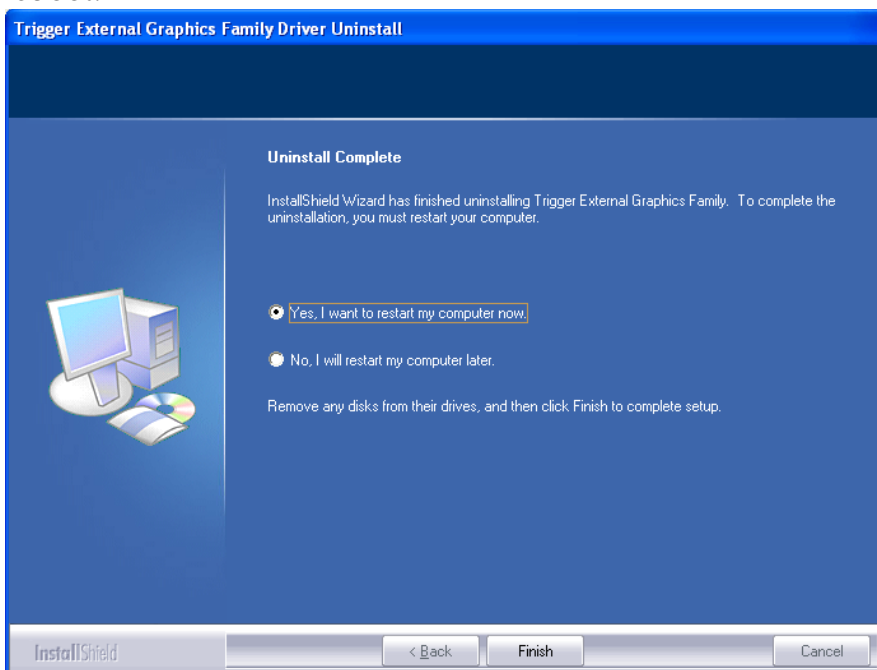
Click “**Uninstall**” button.



**Step 2. Unplug the USB 3.0 DISPLAY ADAPTER and click “OK” to continue.**



**Step 3. Select “Yes, I want to restart my computer now” and click “Finish” to reboot.**





After reboot, you will complete the driver un-installation.

## FUNCTION DESCRIPTION

This section describes several friendly functions provided by the **USB 3.0 DISPLAY ADAPTER** designed to ease your single or multiple USB display experience. A display device described in this section means devices such as CRT, LCD monitor, TV display, and projector...

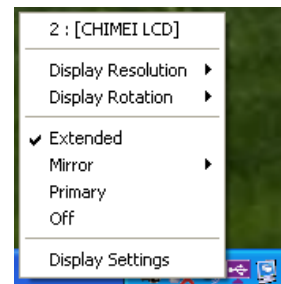
### ACCESS USB 3.0 DISPLAY ADAPTER UTILITY

Make sure the USB 3.0 Display Adapter is attached to the PC.

Look for an icon  "Super Utility" under the "Shown hidden icon" on Windows 7 or two icons  on the lower right toolbar on Windows XP. Right-click the icon to access the variety of functions associated to the adapter.

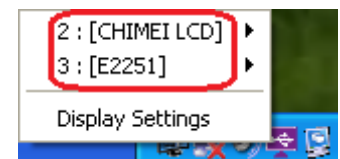


The first view of the utility, you will notice below sections on the top menu.



### DISPLAY ID – Smart Display Device ID Detection

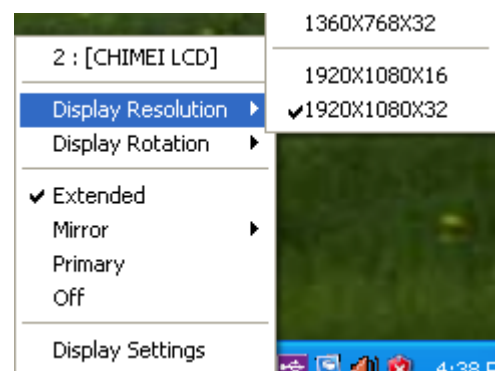
USB 3.0 Display Adapter supports VESA defined DDC/EDID. The utility could show the **display device ID** whenever it is attached to the USB 3.0 Display Adapter.



If there is no display device attached to the USB 3.0 Display Adapter, an "**Unknown Monitor**" ID will be shown. In some cases, the attached display device does not support EDID, the ID will also be defined as "**Unknown Monitor**".

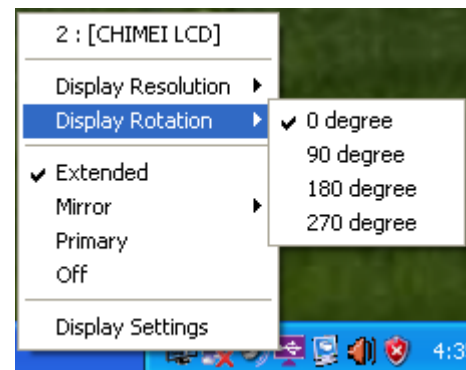
### DISPLAY RESOLUTION – Fast Access to Display Resolution Setting

The default setting resolution is:  
1024 \* 768 \* 32bit.



## DISPLAY ROTATION

4 options available: “0°, 90°, 180°, 270° under the Extended or Primary display modes. It is a useful function for some rotatable display device.

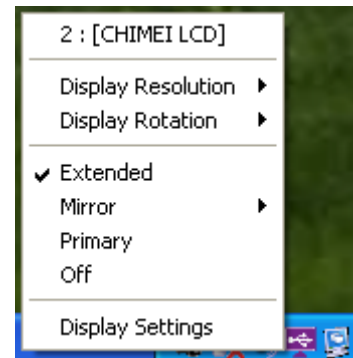


## DISPLAY MODES

### ◆ “EXTENDED” DISPLAY MODE (DEFAULT)

A default display mode; this feature allows the attached USB Display enabled display device to work as “Extended” display of the on-board screen. The extended working space improves work efficiency.

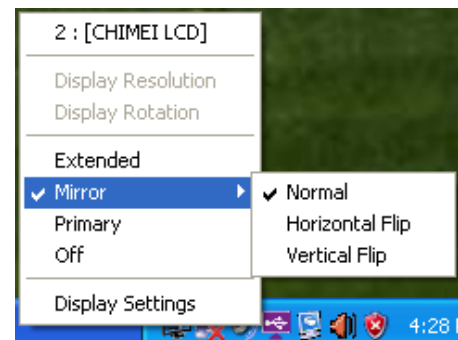
You may change the relative position of this extended USB Display enabled display device under the Display Settings.



### ◆ “MIRROR” DISPLAY MODE

This feature allows the same contents of on-board screen to be displayed (mirroring) to the USB Display enabled display device.

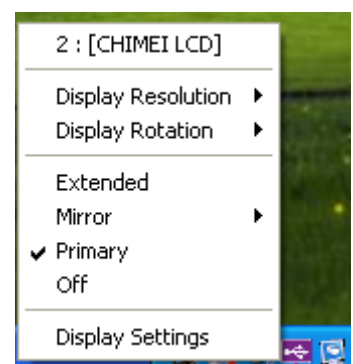
The screen resolution setting on the USB Display enabled device will follow the on-board screen’s resolution. For example, if the on-board screen’s resolution is 1024x768x32bit, and the USB Display enabled device will set as the same resolution.



### ◆ “PRIMARY” DISPLAY MODE

A unique feature to allow USB Display enabled device to act as the main working display. The USB 3.0 Display Adapter will work as the main graphics adapter of the system. The on-board screen will work as the extended display.

Please be advised that some display utility and drivers that shipped with certain AGP and built-in display

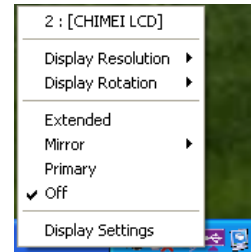




adapters may prevent this option from working on some systems. You may disable the other utility program (usually found in the same toolbar located on the bottom right hand corner) to make this function work properly.

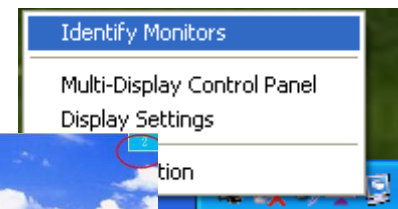
#### ◆ “OFF” DISPLAY MODE

This option disables the video output from **USB 3.0 DISPLAY ADAPTER**.



## IDENTIFY MONITORS

Easy display identification via a serial number will be showed on the upper right corner of all attached display devices.



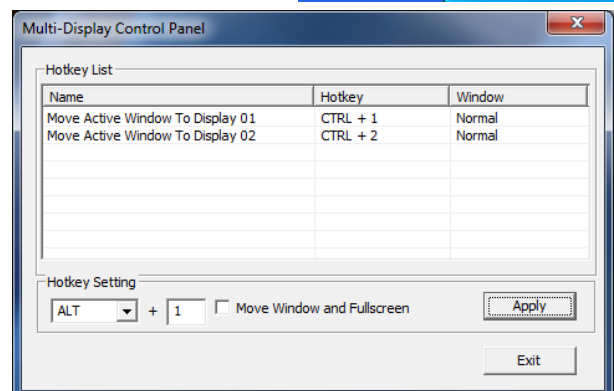
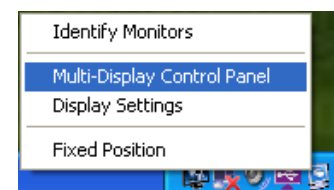
## MULTI-DISPLAY CONTROL PANEL

An unique feature to allow much quicker and simpler working experience under multi-display environment. A series of hotkey to quickly move active window or cursor to

the desired display device (either on-board or each USB Display enabled devices).

The default setting of hotkeys can be found on the Hotkey List of “Multi-Display Control Panel”.

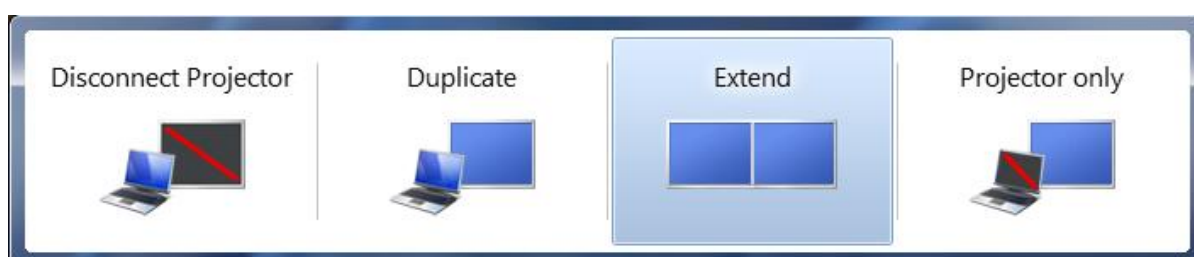
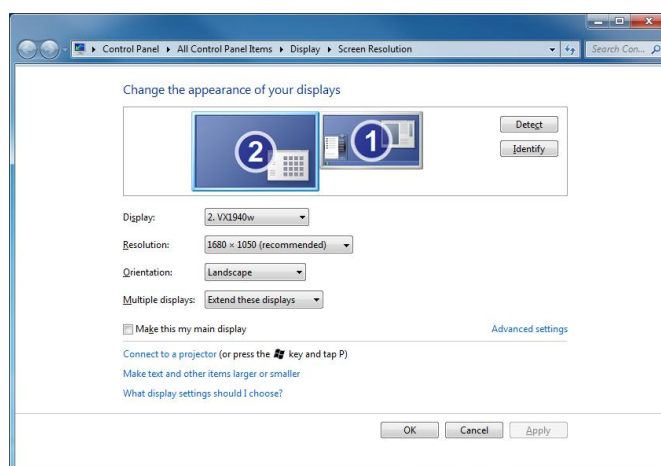
For example: **Ctrl + 2** means: to move the window to the Display 2.






## DISPLAY SETTINGS

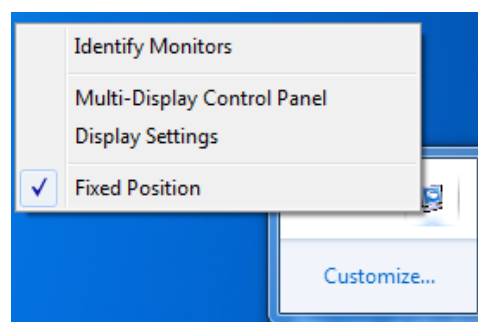
Fast access to the system “Display Settings”.



※ You also can press  key and tap **P** to select the display modes on Windows 7.

## FIXED POSITION

It remains the prior setting of display location after restart the computer.



## REGULATORY COMPLIANCE

---

### FCC

This equipment has been tested and found to comply with FCC 47 CFR PART 15 SUBPART B (Class B) & IC ICES-003.

Operation is subject to the following two conditions:

- This device may not cause harmful interference
- This device must accept any interference, including interference that may cause undesired operation of the device.

### CE

This equipment is in compliance with the requirements of the following regulations:

EN 55022 : 2006 + A1 : 2007, Class B

EN 61000-3-2 : 2006

EN 61000-3-3 : 1995 + A1 : 2001 + A2 : 2005

EN 55024 : 1998 + A1:2001 + A2: 2003, IEC 61000-4-2 : 1995 + A1: 1998 + A2: 2000

IEC 61000-4-3 : 2006, IEC 61000-4-4 : 2004, IEC 61000-4-5 : 2005

IEC 61000-4-6 : 2003 + A1 : 2004 + A2 : 2006, IEC 61000-4-8 : 1993 + A1 : 2000

IEC 61000-4-11 : 2004

### C-Tick

This equipment is in compliance with the requirements of the following regulations:

AS / NZS CISPR22

### VCCI

This equipment is in compliance with the requirements of the following regulations:

V-2/09/04 & V-3/09.04, J55022

### Disclaimer

Information in this document is subject to change without notice. The manufacturer does not make any representations or warranties (implied or otherwise) regarding the accuracy and completeness of this document and shall in no event be liable for any loss of profit or any commercial damage, including but not limited to special, incidental, consequential, or other damage. No part of this document may be reproduced or transmitted in any form by any means, electronic or mechanical, including photocopying, recording or information recording and retrieval systems without the express written permission of the manufacturer.